

The Impact of Ebola, a Personal Experience

Masanga Hospital Rehabilitation Project
March – August 2014



Jurre van Kesteren

| Medical Officer in Charge

Bart Waalewijn

| International Coordinator CapaCare

MASANGA
HOSPITAL

 CapaCare

In memory of
Joseph Heindilo Ngegba
† 21st August 2014



Masanga Hospital Rehabilitation Project (MHRP)

Tonkolili District

- Sierra Leone: 14 districts
- 6.3 million inhabitants
- 434.937 inhabitants Tonkolili
- 3 Hospitals
 - Magburaka, Government
 - Yele Lion Heart, NGO
 - Masanga Gov/NGO
- 102 PHU



Masanga Hospital Rehabilitation Project (MHRP)

- General community Hospital
 - Bed: 100 | Staff: 90
 - Tonkolili College of Health Sciences
 - Surgical training program (CapaCare)
- Open since 2006
 - Treated nearly 200.000 patients
- Yearly
 - 17.500 out-patient department
 - 3.750 admissions
 - 1.200 surgeries
 - 500 deliveries
- Cost recovery & free health care
 - Hansen's disease (Leprosy) | Under 5's | Pregnant women | Lactating women



MHRP | Emergency Unit



MHRP | Operating Theatre



MHRP | Surgical ward II



Life in Sierra Leone



Life in Sierra Leone



Casus #1-3

- Between March 23rd and April 6th
- No official case definition distributed by MoHS GoSL
- No supportive treatment protocol available
- Problems
 - No isolation unit
 - Hardly any personal protective equipment (PPE) available, questionable quality
 - No Ebola virus disease (EVD) outbreak management protocol available
 - Incinerator not well functioning
 - No body bags, burial ceremony unclear
 - Tonkolili District health management team not prepared at all

Personal Protective Equipment (PPE)

- Guideline WHO/CDC “Infection Control for Viral Haemorrhagic Fevers in the African Health Care Setting”
- PPE
 - Reusable surgical scrub suit
 - Reusable rain boots
 - Disposable surgical gown
 - Disposable plastic apron
 - Two pair of disposable gloves
 - Reusable goggles
 - Face mask (No FFP2/N95 yet)
 - Haircover



Ebola coordinator MHRP

- Coordinating suspected cases MHRP
- Member task force meetings Freetown and Tonkolili
- Set up isolation unit and screening area
- Teaching health care workers (HCW)
- Inspection isolation units neighboring hospitals

Masanga Hospital

Masanga hospital tailored outbreak protocol

>> Financial support Lions Denmark



1. **Screening of all new patients**
2. **Set up isolation unit**
3. **Training dressing up and down PPE**
4. **PPE stock + required amount for 1-3 suspected cases/week in coming 8 weeks**
5. Medication and Medical instruments required in isolation unit
6. Safe disposal of waste
7. Safe Burial Practices
8. Evaluation suspected cases so far
9. **When evacuation volunteer staff**
10. **When evacuation expatriate medical staff**
11. Simulation patient and training
12. **On the ground assistance, medical expert | Dr. Arne Broch Brantsaeter, MSF**

Screening Every New Patient



Screening



MASANGA HOSPITAL

Date:

Primary triage for Ebola virus disease for all patients seeking medical care at Masanga Hospital

Name:

Sex:

Date of birth:

Age:

Address:

SECTION A

1. Do you have fever, or did you have fever during last 21 days? Yes ☐ no ☐
2. Ask patient to measure temperature, give thermometer to patient
Document temperature. Is it above 38 degrees Celsius? Yes ☐ no ☐

A

SECTION B

3. Have you travelled during the past month to Guinea, Liberia or areas in Sierra Leone with Ebola virus disease? Yes ☐ no ☐
4. Have you had contact with someone who has been ill with fever after travelling to the above mentioned countries/areas during the last month? Yes ☐ no ☐

B

SECTION C

Do you have – or had during the last week - ONE (1) or more of the following symptoms?

5. Blood from nose or mouth, blood in: urine/feces/vomit or any other unexplained bleeding? Yes ☐ no ☐
6. Rash or red eyes Yes ☐ no ☐

Do you have – or had during the last week - TREE (3) or more of the following symptoms?

7. Headache Yes ☐ no ☐
8. Vomiting and or nausea Yes ☐ no ☐
9. Anorexia and or loss of appetite Yes ☐ no ☐
10. Diarrhea Yes ☐ no ☐
11. Weakness and or severe fatigue Yes ☐ no ☐
12. Abdominal pain Yes ☐ no ☐
13. General pain and or pain in muscles and joints Yes ☐ no ☐
14. Difficulties in swallowing and or breathing Yes ☐ no ☐

C

Get CHO/2nd on call if

Section A+B+C are positive

Section A+B are positive

Section A+C are positive

Section B+C are positive

Wait till arrival of CHO/STP/MD before commencing screening new patients.

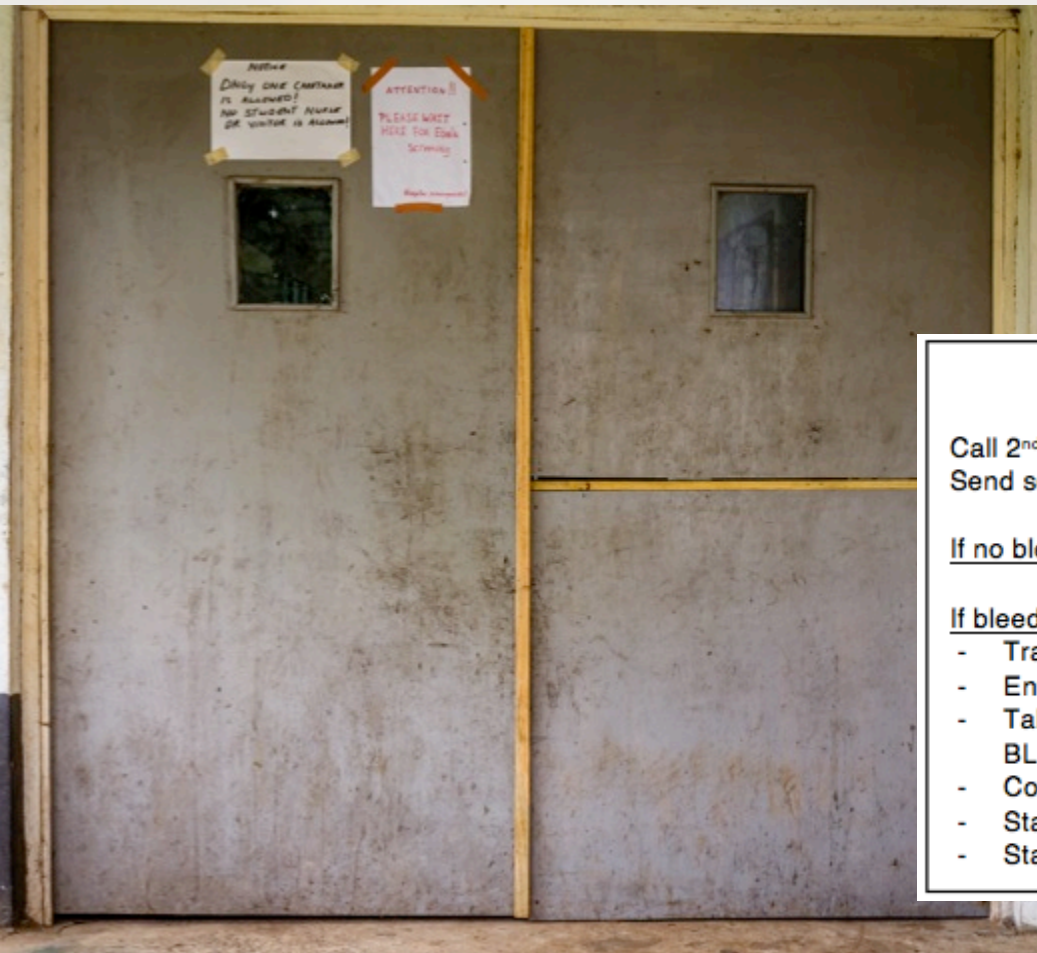
Do not touch patient!

Until further notice no new patients allowed to enter triage area.

Screening Emergency Unit

Laminated cards in case of
suspected ebola patient at EU

1. Nurse in charge
2. Cleaner
3. Nurse aide
4. Lab technician
5. Runner
6. STP/CHO



STP / CHO

Call 2nd On-call and Dress up in PPE

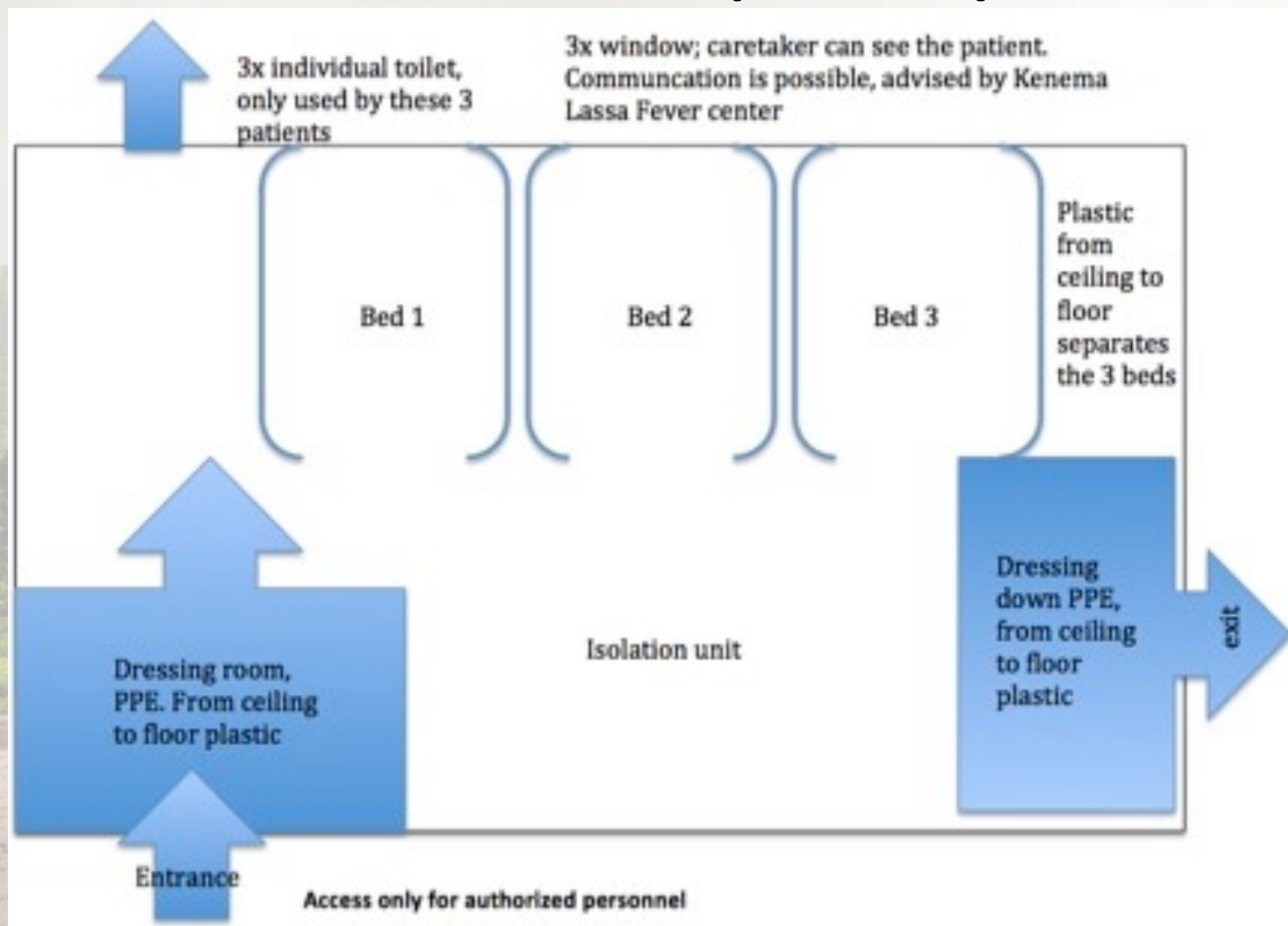
Send someone to UNLOCK isolation unit BEFORE patient transfer

If no bleeding, await 2nd on call before transferring patient

If bleeding, continue with instructions:

- Transfer patient to IU with nurse aid in PPE
- Enter WITH patient through patient entrance
- Take 10mls of blood & place in cooler for Kenema. NO OTHER BLOODS
- Commence IV fluids and ORS
- Start PCT, ACT, chloramphenicol and ampicillin in all patients
- Start metronidazole if BLOOD in stool

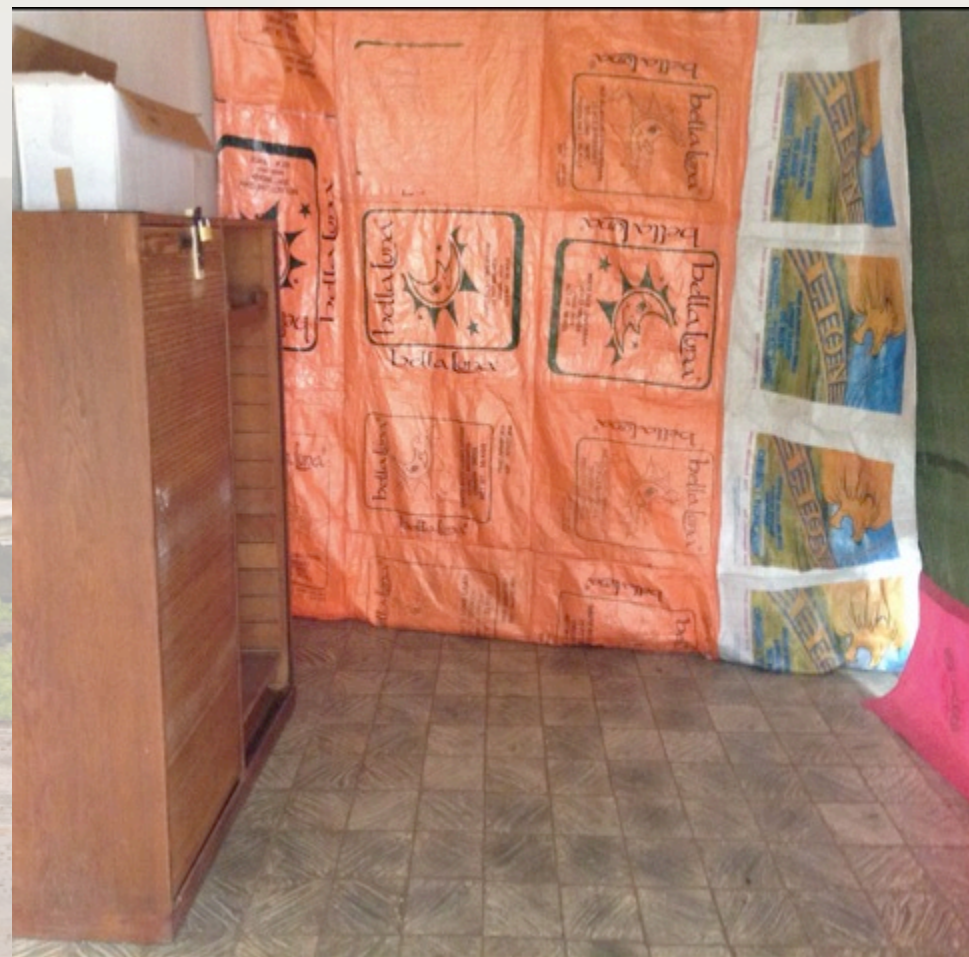
Isolation Unit | Blueprint



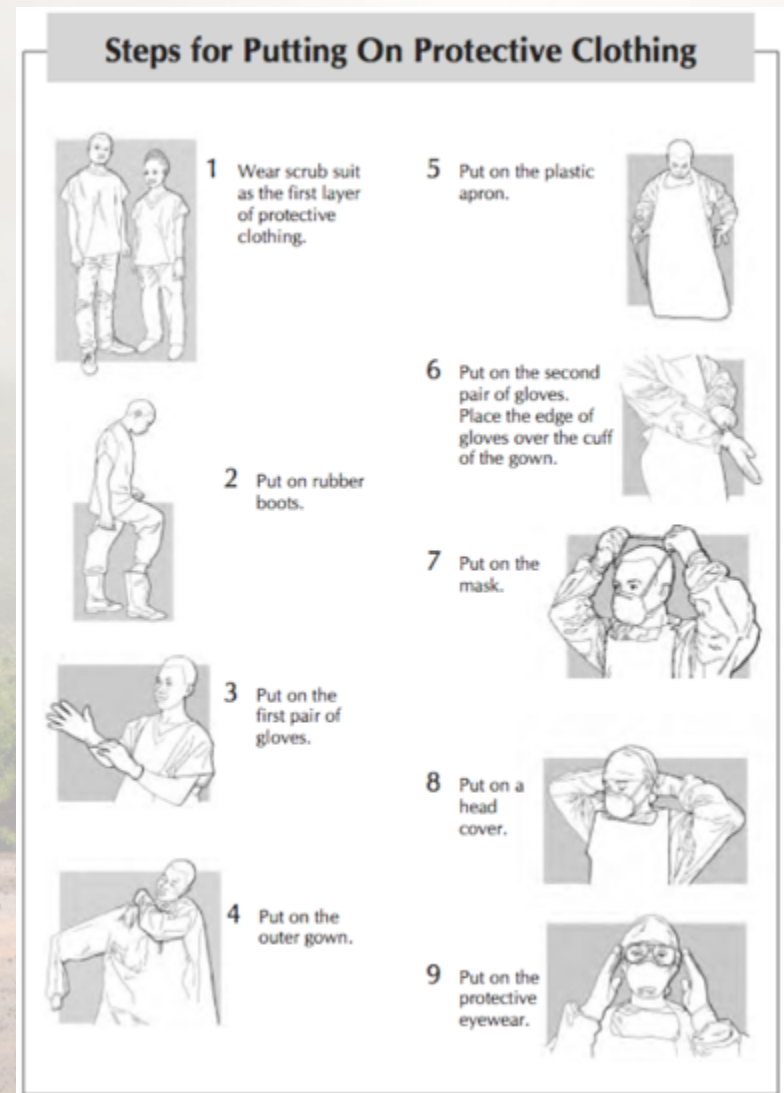
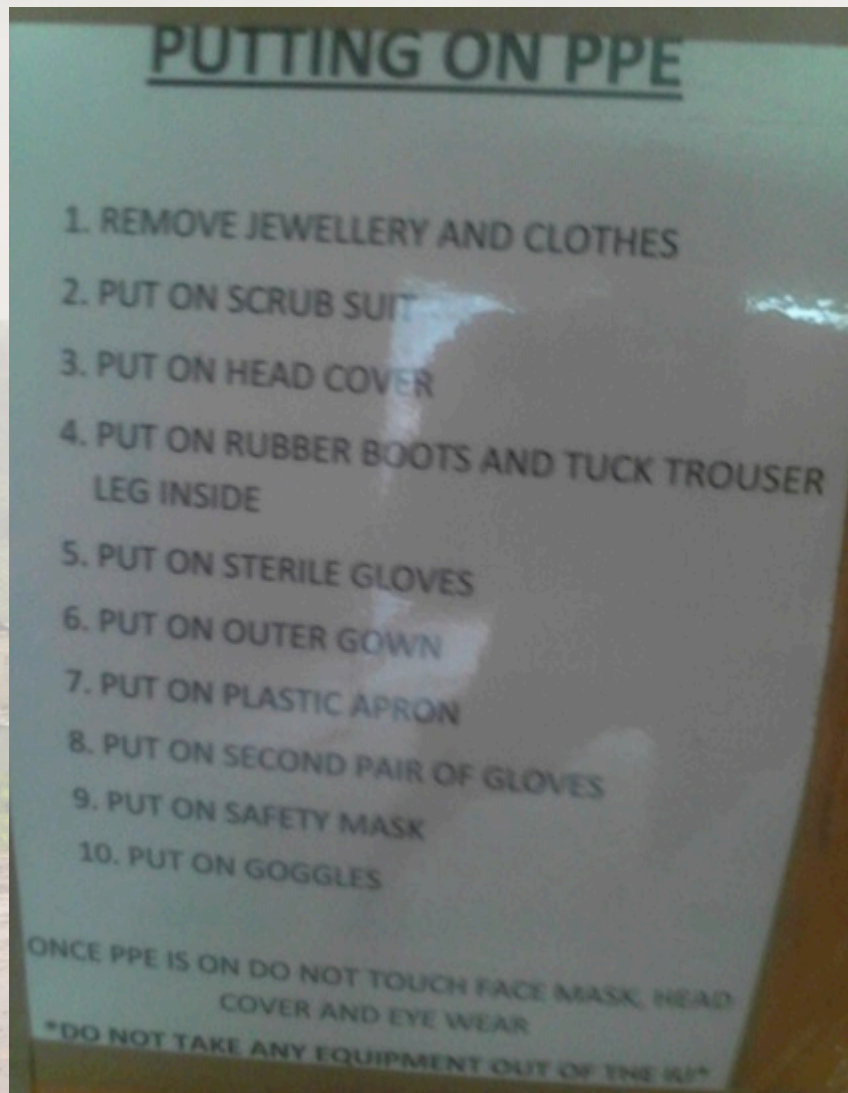
Isolation Unit | Outside



Isolation Unit | Donning area



Isolation Unit | Dressing up



Isolation unit | Beds



Isolation Unit | Water supply



Isolation Unit | Doffing area



Steps for Taking Off Protective Clothing



1 Disinfect the outer pair of gloves.

7 Remove the eyewear.



2 Disinfect the apron and the boots.

8 Remove the head cover.



3 Remove the outer pair of gloves.

9 Remove the mask.



4 Remove the apron.

10 Remove the boots.



5 Remove the outer gown.

11 Remove the inner pair of gloves.



6 Disinfect the gloved hands.

12 Wash hands with soap and clean water.



Evacuation – August 2014

Major problems on National and District level

- No signs of improvement
- Increase confirmed cases
- No additional financial support
- Personal threats from communities to HCWs
- Police and military surveillance
- Social distress



MASANGA HOSPITAL

www.masangahospital.org

medicalofficer@masanga.dk



SYMPOSIUM
SURGERY IN LOW RESOURCE SETTINGS
NOVEMBER 14TH-16TH 2014

WHAT
IS YOUR
ROLE?

LAB111 Amsterdam - www.surgicalneed.nl



va. communication by design



 **REDERIJ DE NEDERLANDEN**
BELEEF AMSTERDAM